

Dual-Polar 4.40-5.00 GHz C-Band Range



Dual-Polar C-Band Antenna Range

Chelton's dual-polar C-Band antenna range includes directional, sector, spring and non-spring mount omni-directional antennas.

Antennas can be easily configured to provide circular polarisation or $\pm 45^\circ$ dual slant.

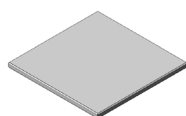
The antennas in this range are designed to an extremely high specification, are rugged and have demonstrable and proven performance.

Key Features

- Dual V&H
- Rugged
- Proven Results
- CP or $\pm 45^\circ$ Options

DIRECTIONAL

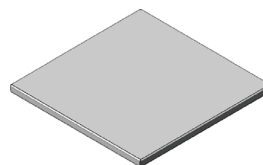
Part Number	Frequency GHz	Gain dBi	Beamwidth		Polarisation	Size mm	Connector
			Az	El			
FPA18-4.7VH/1997	4.40- 5.00	19	16	16	Dual V&H	270x270x13	N(F)x2
FPA21-4.7VH/1998	4.40- 5.00	22	16	8	Dual V&H	466x262x13	N(F)x2
FPA24-4.7VH/1999	4.40- 5.00	24	8	8	Dual V&H	468x468x14	N(F)x2



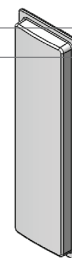
FPA18-4.7VH/1997



FPA21-4.7VH/1998



FPA24-4.7VH/1999



SA16-90-4.7VH/2174

SECTOR

Part Number	Frequency GHz	Gain dBi	Beamwidth		Polarisation	Size mm	Connector
			Az	El			
SA16-90-4.7VH/2174	4.40- 5.00	16	90	6	Dual V&H	650x200x42	N(F)x2

OMNI-DIRECTIONAL

Non-Spring Mount

Part Number	Frequency GHz	Gain dBi	Beamwidth		Polarisation	Size mm	Connector
			Az	El			
OA4-4.7VH/2209	4.40- 5.00	4	360	40	Dual V&H	218.5x90 Ø	N(F)x2
OA6-4.7VH/2210	4.40- 5.00	6	360	20	Dual V&H	300x90 Ø	N(F)x2
OA8-4.7VH/2211	4.40- 5.00	7.5	360	10	Dual V&H	500x90 Ø	N(F)x2

Spring Mount

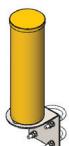
Part Number	Frequency GHz	Gain dBi	Beamwidth		Polarisation	Size mm	Connector
			Az	El			
OA4-4.7VH-SM/2262	4.40- 5.00	4	360	40	Dual V&H	336.5x90 Ø	N(F)x2
OA6-4.7VH-SM/2263	4.40- 5.00	6	360	20	Dual V&H	418x90 Ø	N(F)x2
OA8-4.7VH-SM/2264	4.40- 5.00	7.5	360	10	Dual V&H	618x90 Ø	N(F)x2



OA4-4.7VH/2209



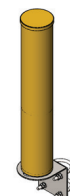
OA4-4.7VH-SM/2262



OA6-4.7VH/2210



OA6-4.7VH-SM/2263



OA8-4.7VH/2211



OA8-4.7VH-SM/2264