

# SVD2-7790/1243

Slim Omni Antenna



## Key Features

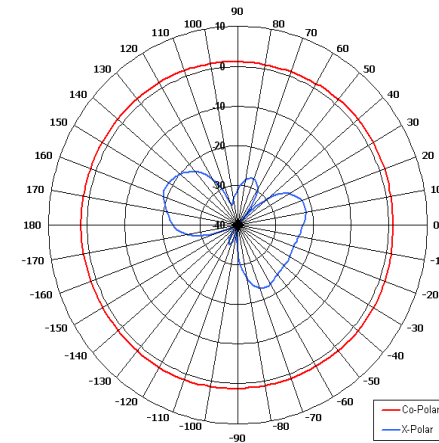
Designed for Mobile Applications

Suitable for Multiple Applications

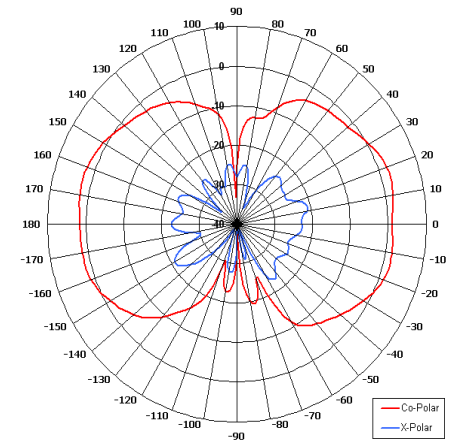
Compact

Lightweight

Ground Plane Independent

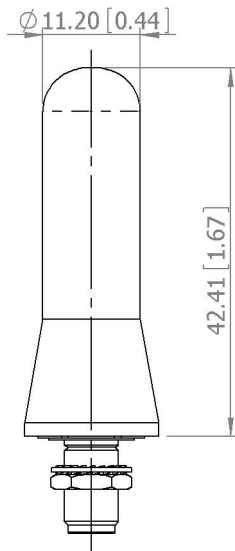


Azimuth Pattern

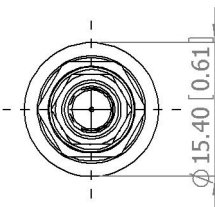


Elevation Pattern

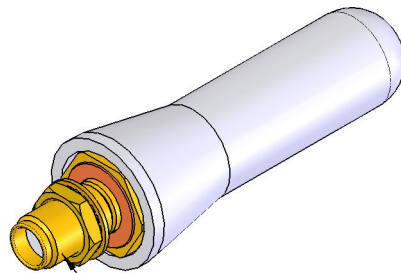
**SIDE VIEW**



**BASE VIEW**



**GA: 1243**



MOUNTED VIA  
SMA(F) CONNECTOR

## ELECTRICAL

Frequency	7.50 - 8.00 GHz
Gain	2.5 dBi Nom
Polarisation	Linear (Vertical)
Beamwidth	360° (Az) x 64° (El) Approx
Cross Polar	>20 dB Typ
VSWR	1.5:1 Maximum
Power Rating	20W
Front to Back	N/A

## MECHANICAL

Standard Finish	Grey
Mass	10g (0.35 oz)
Temperature	-20° to +50°C
Wind Loading	N/A

## MOUNTING OPTIONS

Kits Available	N/A
See separate data sheets	

## ADDITIONAL NOTES

Issued 200410

Chelton Limited has a policy of continuous development and stress that the information provided is a guide only and does not constitute an offer or contract or part thereof. Whilst every effort is made to ensure the accuracy of the information contained in this brochure, no responsibility can be accepted for any errors or omissions.

The copyright of antenna designs and images is copyright protected and owned by Chelton Limited.  
©Chelton Limited

For further information please contact:  
Chelton Limited,  
Lambda House, Cheveley,  
Newmarket, Suffolk CB8 9RG, UK.  
T: +44 (0)1638 732 177  
E: [newmarket.sales@chelton.com](mailto:newmarket.sales@chelton.com)  
W: [www.chelton.com/microwave](http://www.chelton.com/microwave)