

EVD2-1.5V/1646/LDS

Extra Rugged Omni Antenna



Key Features

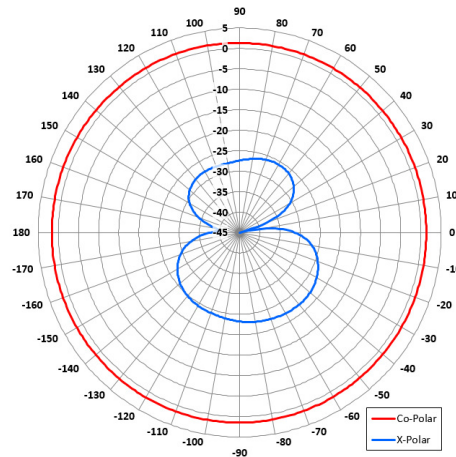
Suitable for Airborne Applications

Designed for Air to Ground Telemetry Link

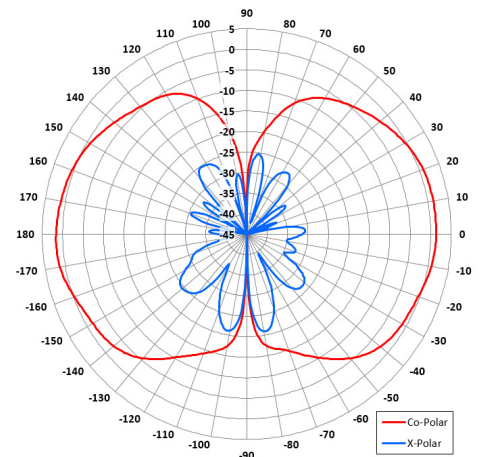
Rugged Design

Compact Design

Pattern- Omni Directional

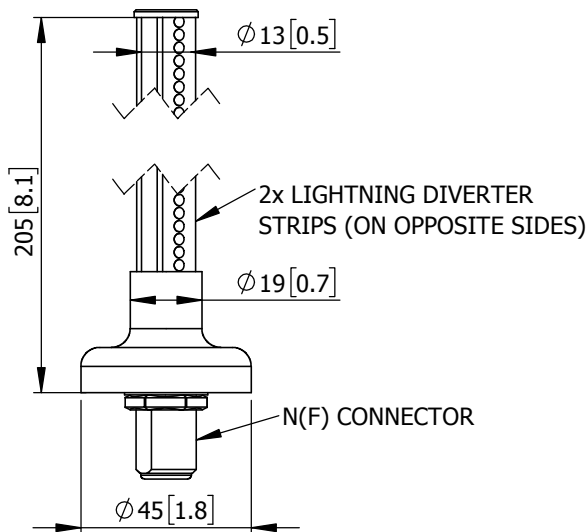


Azimuth Polar Plot



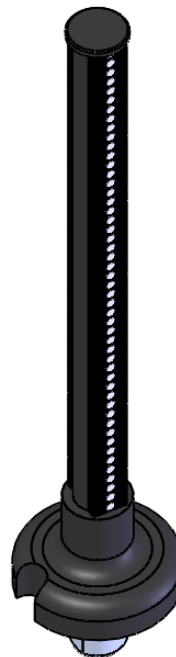
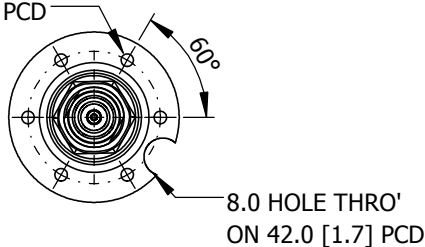
Elevation Polar Plot

SIDE VIEW



MOUNTED VIA 6 OFF
M4 TAPPED HOLES
ON A 35.0 [1.4] PCD

BASE VIEW



ELECTRICAL

Frequency: 1.40 - 1.525 GHz

Gain: 2 dBi Nom.

Polarisation: Linear (Vertical)

Beamwidth: 360° (Az) x 70° (El)

Cross Polar: 20 dB

VSWR: 2:1 Typ.

Power Rating: 10 W

Front to Back: N/A

Electrical Tilt: N/A

MECHANICAL

Standard Finish: Matt Black

Mass: 125 g / 4.41 oz

Temperature: -20° to +50°C

Wind Loading: 430 g / 15.2 oz @ 100 mph

MOUNTING OPTIONS

Kits Available: N/A

See Separate Data Sheets

DS: 1646LDS-3 Issued: 270218

Dimensions: mm [inches] M

Chelton Limited has a policy of continuous development and stress that the information provided is a guide only and does not constitute an offer or contract or part thereof. Whilst every effort is made to ensure the accuracy of the information contained in this brochure, no responsibility can be accepted for any errors or omissions.

The copyright of antenna designs and images is copyright protected and owned by Chelton Limited.
©Chelton Limited

For further information please contact:

Chelton Limited,
Lambda House, Cheveley,
Newmarket, Suffolk CB8 9RG, UK.

T: +44 (0)1638 732 177

E: newmarket.sales@chelton.com

W: www.chelton.com/microwave