

VOA7-1800/150

Omni Antenna



Key Features

Designed for Commercial Applications

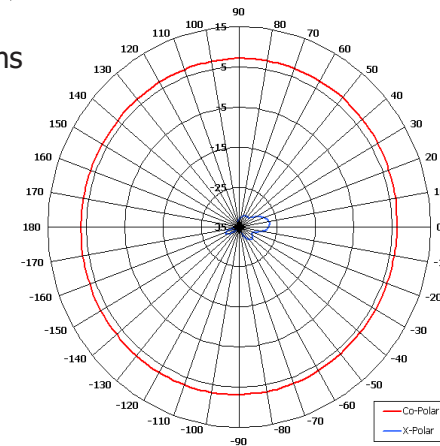
High Power

Suitable for Ground Based

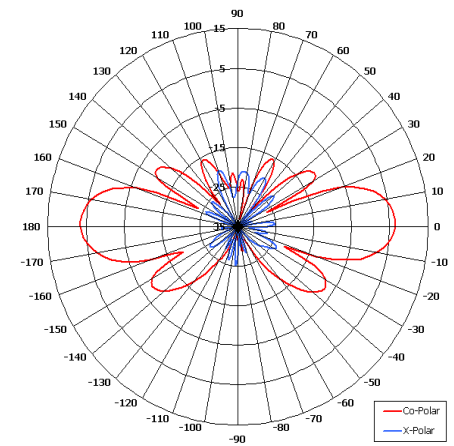
Applications Suitable for Outdoor

Applications

Low Profile

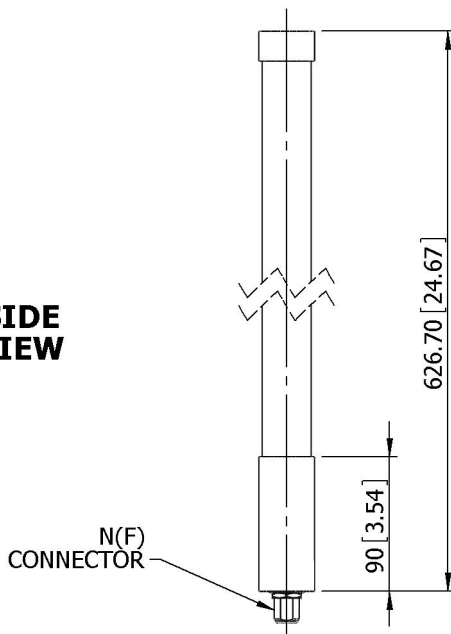


Azimuth Pattern

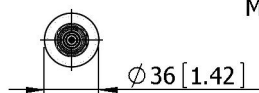


Elevation Pattern

SIDE VIEW



BASE VIEW



GA: 0150

MOUNTED VIA
 $\varnothing 36 [1.42]$
 SPIGOT



ELECTRICAL

Frequency	1.70 - 1.90 GHz
Gain	8.4 dBi Nom
Polarisation	Linear (Vertical)
Beamwidth	360° (Az) x 17° (El) Approx
Cross Polar	20 dB Typ
VSWR	>1.5:1 Typ, 1.67:1 Max
Power Rating	50 W
Front to Back	N/A

MECHANICAL

Standard Finish	Gloss White
Mass	0.29 Kg (10 oz)
Temperature	-40° to +60°C
Wind Loading	3.0 Kg (6.7 lbs) @ 100 mph

MOUNTING OPTIONS

Kits Available	MK4/A
See separate data sheets	

ADDITIONAL NOTES

Issued 231210

Chelton Limited has a policy of continuous development and stress that the information provided is a guide only and does not constitute an offer or contract or part thereof. Whilst every effort is made to ensure the accuracy of the information contained in this brochure, no responsibility can be accepted for any errors or omissions.

The copyright of antenna designs and images is copyright protected and owned by Chelton Limited.
 ©Chelton Limited

For further information please contact:

Chelton Limited,
 Lambda House, Cheveley,
 Newmarket, Suffolk CB8 9RG, UK.

T: +44 (0)1638 732 177

E: newmarket.sales@chelton.com

W: www.chelton.com/microwave